

# HSM Series

## Heated Shelf Merchandiser



HSM-48/5S/T

CE

Featuring exclusive Halo Heat® technology, Alto-Shaam heated shelf merchandisers provide precise, top and bottom heat for the highest quality prepared food- and longer hold times.

Hold a variety of grab-and-go products, including rotisserie chickens, pizza, sandwiches, and more. Drive foodservice profits with hot, ready-to-eat meals. Convenient, fresh meals are displayed in an aesthetically pleasing, customizable merchandiser.

**Experience better quality food** with gentle, even and precise Halo Heat® fanless technology to keep food from drying out.

**Flexibility to control individual shelf temperatures** allows you to hold a variety of products at the proper temperature.

**Boost impulse sales** with LED-lighted shelves, customized branding, backlit interchangeable graphics, pricing rails and window sides.

**Simple operation and easy cleaning** keeps delis and grab-and-go areas operating smoothly.

**Easy-to-load shelves** – pass-through option available for added convenience.

**Made in the USA** with a commitment to quality. Alto-Shaam is ISO 9001:2015-certified.

### Standard Features

- Adjustable thermostat per shelf with a heat-on indicator light
- Latched access panel on the front of the merchandiser
- Four casters



**CAPACITY**

**50** HSM-48/5S/T: Five (5) 1140mm width shelves, ten (10) chicken boats with dome cover per shelf.



**WEIGHT**

HSM-48/5S/T: 91 kg                      18 kg per shelf



**CLEARANCE**

**Rear: 4" (102mm)**

Recommended: 457mm for service access. Charges in connection with inadequate service access are not covered under warranty.



HSM-48/5S/T

### Configurations (select one)

#### Model

- HSM-48/5S/T

#### Electrical

- 208–240V, 1PH

#### Door Options

- None (reach-in models only)
- Rear slide (pass-through models only)
- Rear swing (pass-through models only)
- Front swing (reach-in and pass-through models)

#### Legs or Casters

- 102mm–153mm adjustable legs [5025454]
- 76mm casters [Standard]

### Accessories (select all that apply)

qty

Note: Unit ships without graphics unless selected

- Signage panel, POP Display
- Signage panel, shelf – Rotisserie Chicken
- Signage panel, shelf – Hot Sandwiches
- Signage panel, shelf – Barbecue Ribs
- Signage panel, shelf – Hot & Tasty
- Signage panel, shelf – Grab & Go
- Signage panel, shelf – Hot & Fresh
- Shelf insert for magnetic signage panels, HSM-48/5S (1027306). Magnetic signage panels to be provided by customer.



**CHECK FIRST**

- Merchandiser must be installed level.
- Merchandiser must not be installed in any area where it may be affected by steam, grease, dripping water, high temperatures, or any other severely adverse conditions.

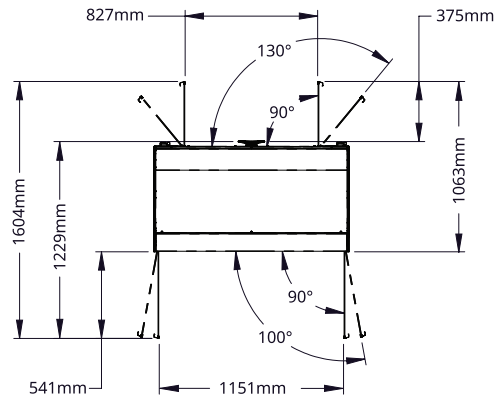


# HSM Series

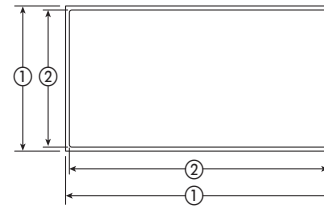
## HSM-48/5S/T



### Dimension Drawings

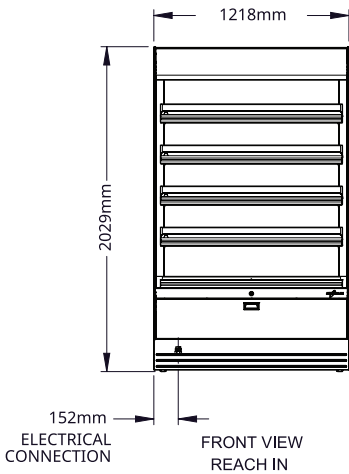


TOP VIEW  
REACH IN  
SWINGING DOORS OPEN

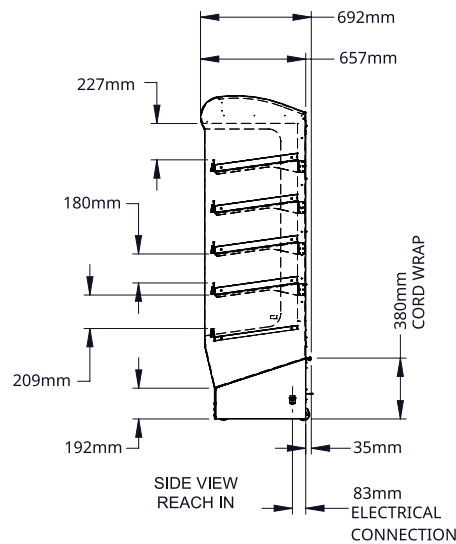


Shelf Dimensions (W x D)  
① = Overall ② = Heated Surface

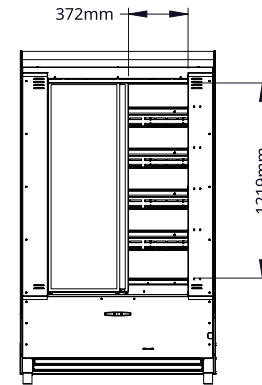
HSM-48/5S  
① 1140mm x 521mm  
② 1114mm x 495mm



FRONT VIEW  
REACH IN



SIDE VIEW  
REACH IN



REAR VIEW  
PASS THRU  
SLIDING DOORS



DIMENSIONS

<b>Model</b>	<b>Exterior (H x W x D)</b>	<b>Net Weight</b>
HSM-48/5S/T	2029mm x 1218mm x 692mm	255 kg
HSM-48/5S/T	<b>Ship Dimensions (L x W x H)*</b>	<b>Ship Weight*</b>
	1422mm x 1600mm x 2261mm	350 kg

\*Contact factory for details.



ELECTRIC

HSM-48/5S/T	V	Ph	Hz	Awg	IEC	A	Breaker (A)	kW	Plug Configuration	Residual Current Device*
230V	230	1	50/60	—	2.5	20.4	30	4.9	No cord/no plug	Type B

Electrical connections must meet all applicable federal, state, and local codes.  
Dedicated circuit required.  
\*Reference

## CONTACT US

W164 N9221 Water Street | Menomonee Falls, Wisconsin 53051 | U.S.A.  
Phone: 262.251.3800 | 800.558.8744 U.S.A./Canada | Fax: 262.251.7067 | [alto-shaam.com](http://alto-shaam.com)